

Drop In (When I'm Not Home)

lead sheet

medium blues

COMPOSER: GAIL SELKIRK © 2002

F⁷ A^{b7} D^{b7}

Well, I heard you're back in town, plun - der new parts, rob a few hearts but it won't be ripe,

B^{b7} C⁷ F⁷ D^{b7} E^{b7} F⁷ A^{b7}

babe, ripe pick-ings with me..... I said nix to all your tricks, I'm able to dis - arm

D^{b7} B^{b7} C⁷ F⁷

all of your charm. It won't be ripe, babe, ripe pick-ings with me..... They told

B^{b7} D^{b7} G^{b7} C^{b7} E^{bm7}

me that you were e - vil. They told me that you were bad. The worst of all the look-a-like dev-

G^{m7b5} C⁷ G^{b9} F^{7/b9} B^{bm7} D^{b7} G^{b9}

- ils they ev-er had..... The next neigh-bour-hood you roam, pull up in your steel and chrome.

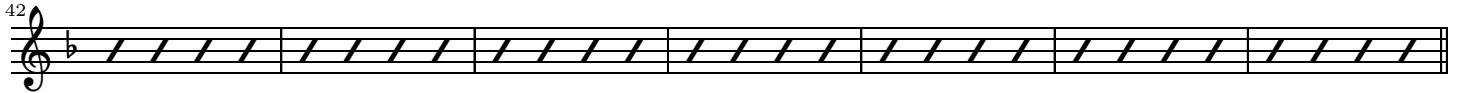
C^{b7} G^{b9} G⁹ C^{9/sus4} F⁷ D^{b7} E^{b7} F⁷ A^{b7}

Just drop in..... when I'm not home..... SOLO

Db^7 Bb^7 C^7 F^7 Db^7 Eb^7 F^7



Ab^7 Db^7 Bb^7 C^7 F^7



Bb^7 Bbm^7 C^7 Fm^7 Bb^7



You're the one who lies and cheats. Your rep - u - ta - tion taints the streets. While oth - ers pen the dirt and grime,

Bbm^7 C^7 Fm^7 Db^7 Dbm^7 Eb^7



you're the auth-or of all slime, cre-a - ting woe with-out a doubt, spread-ing e - vil all a - bout.

Abm^7 Ebm^7 F^7 Bbm^7 Fm^7 G^7 C^7 F^7



Ex-pert of in-trigue and stealth that I know too well, my-self. So, if you knock up-on my door,

Ab^7 Db^7 Gb^9 G^9 $\text{C}^9/\text{sus4}$ F^7 Db^7 Eb^7



pay a house-call, well, sure-ly you're in - vi-ted to drop in when I'm not home.....