

The Swan's Lament

lead sheet

swing waltz

COMPOSER: GAIL SELKIRK © 2002

Gm D⁷/F[#] Gm⁷/F Em⁷b⁵ E^b7 D⁷ Gm⁷



So red, so gold, so beau-ti - ful the sun-rise, trees stand so bar-ren and bent. We could

A^b7 Gm D⁷/F[#] Gm⁷/F Em⁷b⁵ E^b7



be in-side where it's warm but in-stead we stroll and hear her on-ly one cry, sigh-ing, be-liev-ing

D⁷ E⁷/[#]9 E^bmaj⁷ A^b9/add13 D^bmaj⁷ G^b9/add13



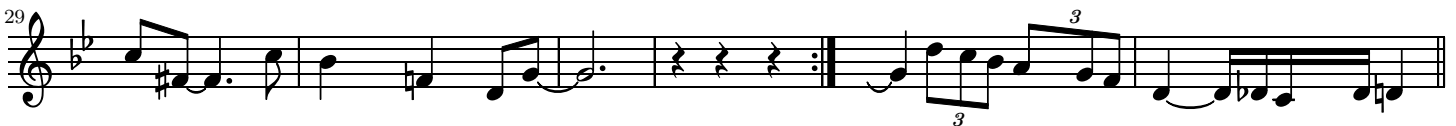
she needs a friend. Oh... .., the riv-er runs weak, the wind blows so cold. When

C^bmaj⁷ F⁹/add13 B^b9 C⁹ C[#]9 D⁹ Em⁷b⁵ E^b7 D⁷ D^b7 C⁷ C^b7 B^b7



we try to speak, our lips freeze, so cold. No - one will mind if we move a lit-tle clo-ser

A⁷ A^b7 Gm E⁷ E^b7 A^b7 Em⁷b⁵ A⁷ D⁷ G⁷



to hear the swan's sweet la-ment... .. to hear .. the swan's ... sweet la-ment.